

A THOUGHT EXPERIMENT

PROPOSITION

A friendly, generative AI program, instead of academics, will be adopted to teach undergraduate students.

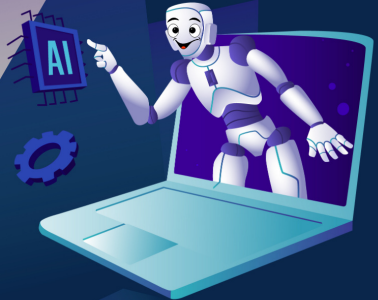
VEIL OF IGNORANCE

Without knowing your role at the University, consider the challenges and opportunities that AI poses and decide:

What would need to be true to create the most ethical and socially just scenario for all?



is typing...



Task one: discuss the challenges you feel AI poses to education, and identify the top two issues you think would create a more vulnerable learning environment.

friendly AI
will take
students

relationships
that AI bot
will create or
not

subject
content:
teaching
practicals?

Flexibility

Centralised
power-
toxic

Cannot
adjust to
complexity
quickly

AI will replicate
poor human
processes and
systems

Sources of
data for bot-
reliability
and validity

Impact
of group
think

Alienation
of
individuals

Lacking
consciousness
and nuance of
sentiment
meaning

quality of AI
program being
generated by
developers

University
of AI

Platforms of
education
may change

Questions nature
of institutions and
their governance
and process

lack of
distributive
systems can
be dangerous

Personal
human
interaction
and response

lack of
empathy

Lack of
personal
engagement

replication
of bias

Task Two: discuss the opportunities you feel AI presents to education, and identify the top two ideas you think would create a less vulnerable learning environment.

Tailor content to target audience

One-to-one tutoring and testing with AI

More efficient references formatting

Literature reviews- more sophisticated searches

Filtering for personalised needs

Support 24/7 never tired or sick, available all the time

Learning activity can adapt (or not)

Organise and rationalise priorities

Create psychological safety and confidence

marking more accurate, quicker, do more without subjectivity

Inclusive- open to all information

Developing new skill sets

CRM systems- prompts- follow-up

AI thinking- values free/judgment free

Prepare for jobs of the future

Bot does not have a 'bad day'

Bot is always friendly and kindly

Good tools can create good lessons

Catering for students learning preferences

Blended model of AI/Human approaches

Bot can recognise AI generated content

Standard responses- not skim

Exposing students to processes that help to identify bias

Can we really develop and manage a relationship with a friendly generative AI program that can educate people, but does not arbitrarily interfere or limit intellectual curiosity, innovativeness, and creative freedom?

What is "Prompt Engineering", and how will this skill benefit people?

Ask right questions

Should we program AI to teach students in their preferred way (which maybe a sub-optimal way)?

Would an AI that has our best interests in mind, allow a student to learn in a way which isn't in their best interests?

If the AI knows what approach is best for a student's learning, then would it be 'right' for it to insist on this approach (even if students wanted to do it another way)?

Useful decision-making

Critical Thinking and evaluation context

Data into knowledge

What will be the role of Humans in an AI teaching space?

Domain knowledge is valuable, and required for AI to narrow the scope and gain expertise, how limiting, to the potential of an AI program, is a discipline which is too siloed in its thinking?

Generative Pre-trained Transformer (GPT) systems are trained using reinforcement conditioning theory (rewards and punishment) with feedback for improvement. Should we train it to employ this approach in a teaching format for students and create its own pedagogy?

Echo Chamber

(GPT) systems evolved with "emergent capabilities" beyond the expectations of developers because it identified and synthesised 'patterns of the world' from its extended access to online data sets and significantly increased computational power. What kind of "noise" exists in these data sets, and what is the likely impact on AI's subsequent knowledge/judgement?

NB: Noise could include all forms of bias; faked AI generated content etc (GIGO).

Sources?

AI Product Apps can vary in speed, modalities, capability and costs- would all disciplines need multi-modal applications to create optimal learning conditions, if not, are we creating an unjust system?

Scenario for a 'Fair and Just' world with Humans and AI

More inclusive environment in LMS- removing boundaries

Equal voice for all participants in LMS

Create tutorial content with AI imagery/video of people making it more neutral

Non-traditional students could receive a personalised support profile

Make full use of 24 hours in the day

AI to do the busy work

Humans free to operate at the higher level of thinking and pastoral care

Inclusive of disability/ accessibility needs

AI has to be very carefully constructed

Human element includes overall design and delivery of AI

Human Accountability of the deployment

AI in a Nutshell

<https://youtu.be/2IK3DFHRFfw?si=1TRSmB2zYHR7F42U>

Luck, M. Freedom, AI and God: why being dominated by a friendly super-AI might not be so bad. *AI & Soc* (2024).

<https://doi.org/10.1007/s00146-024-01863-w>